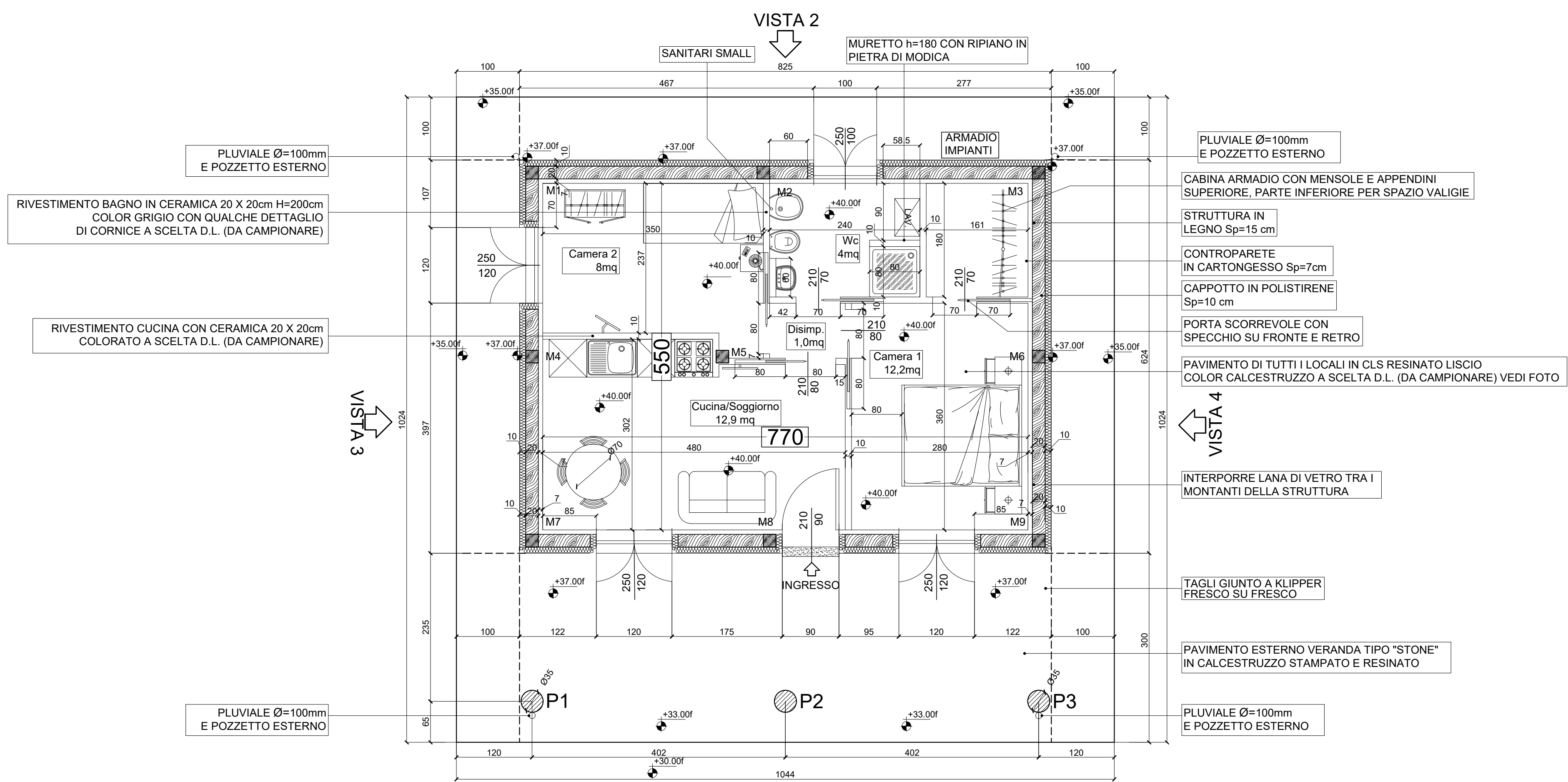
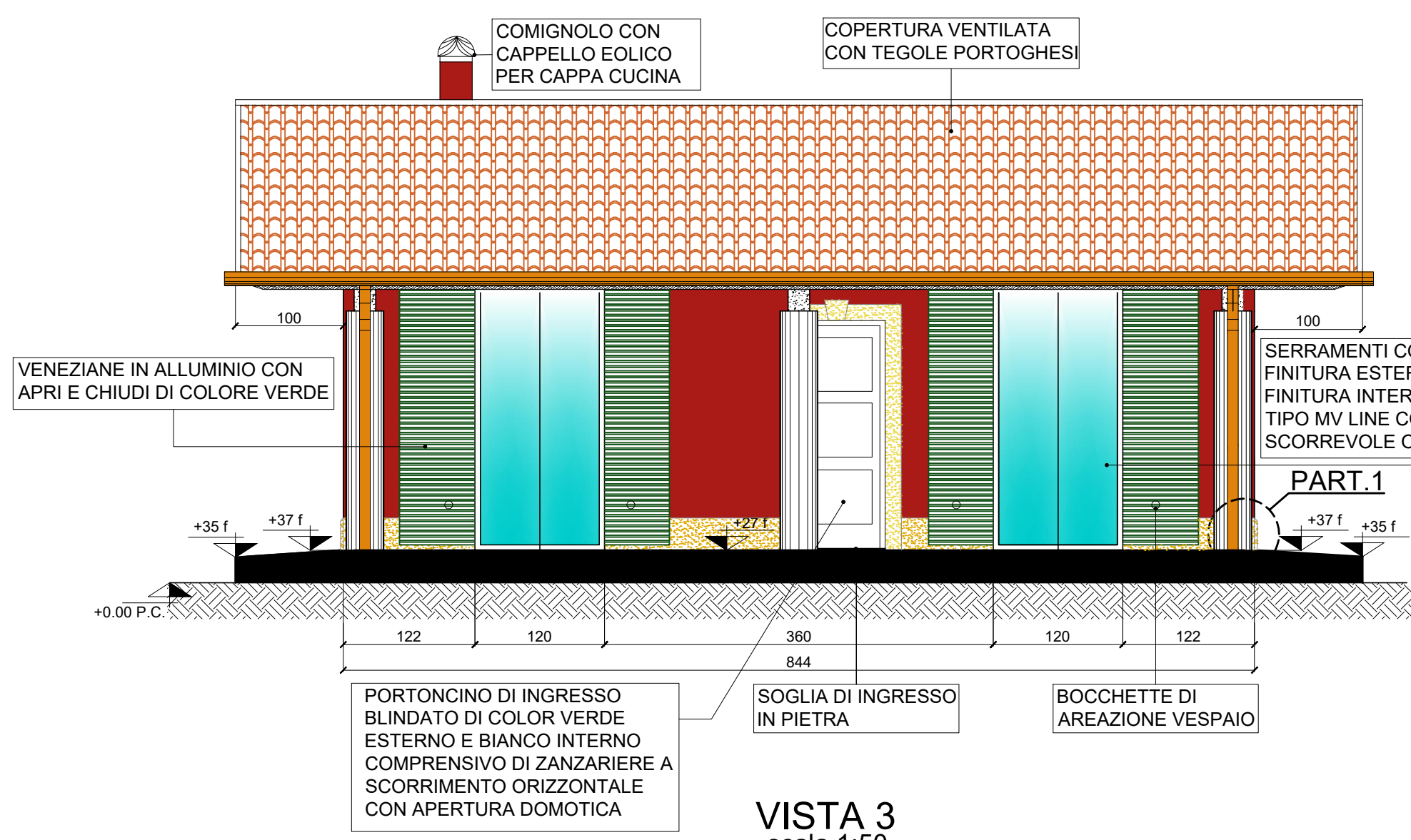


PIANTA UNITA' TIPOLOGICA  
scala 1:50

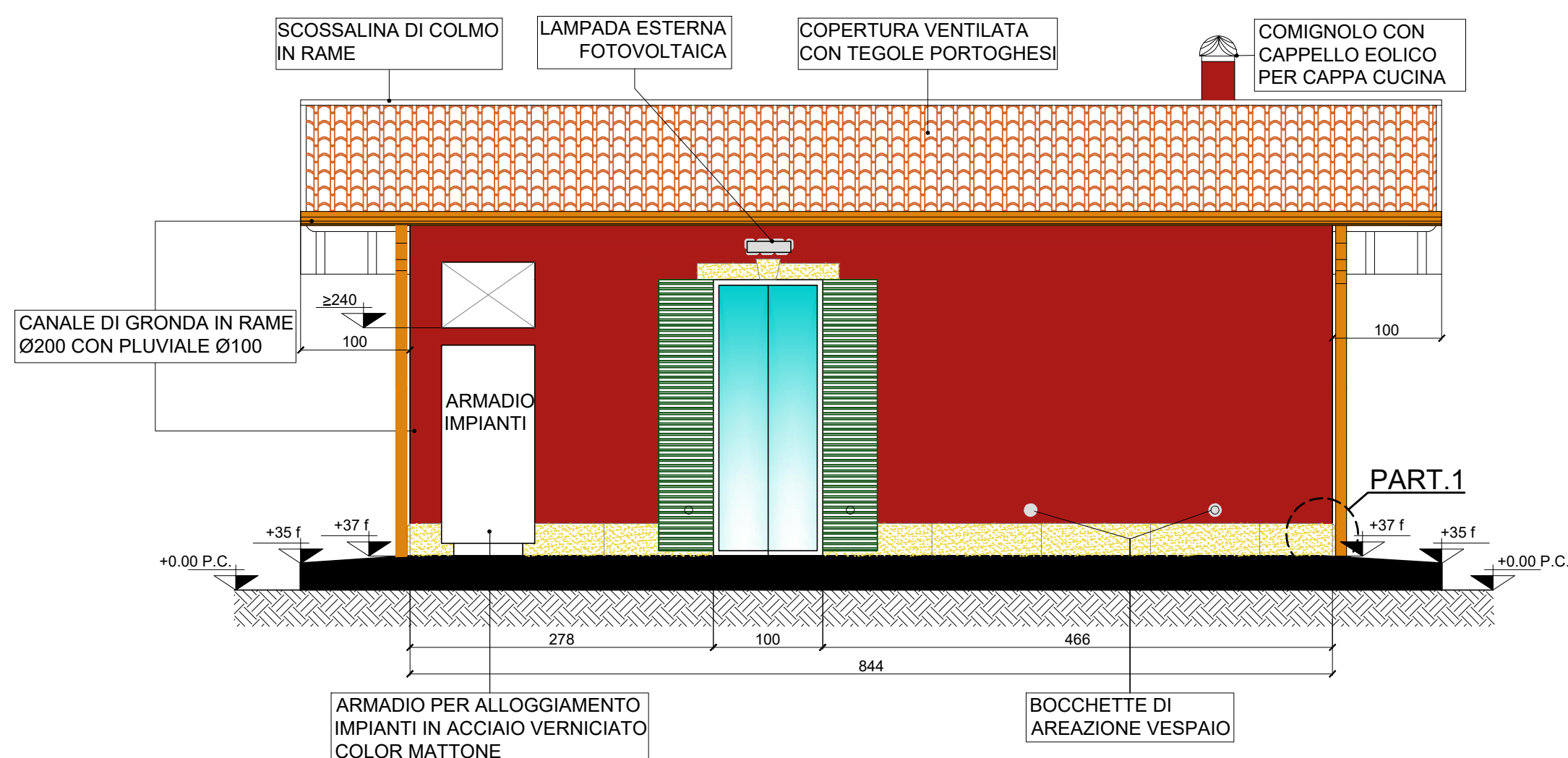


VISTA 1  
scala 1:50

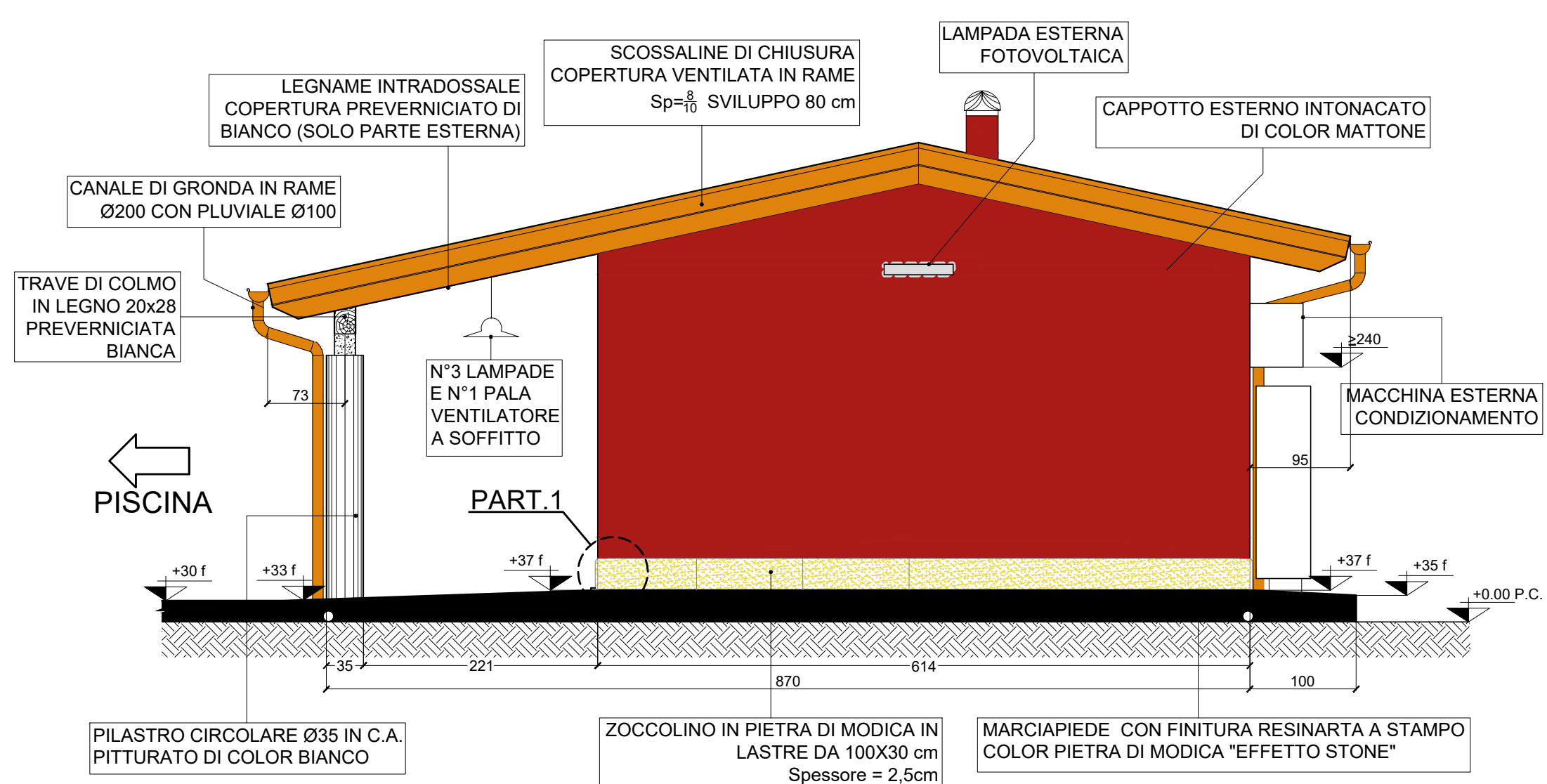
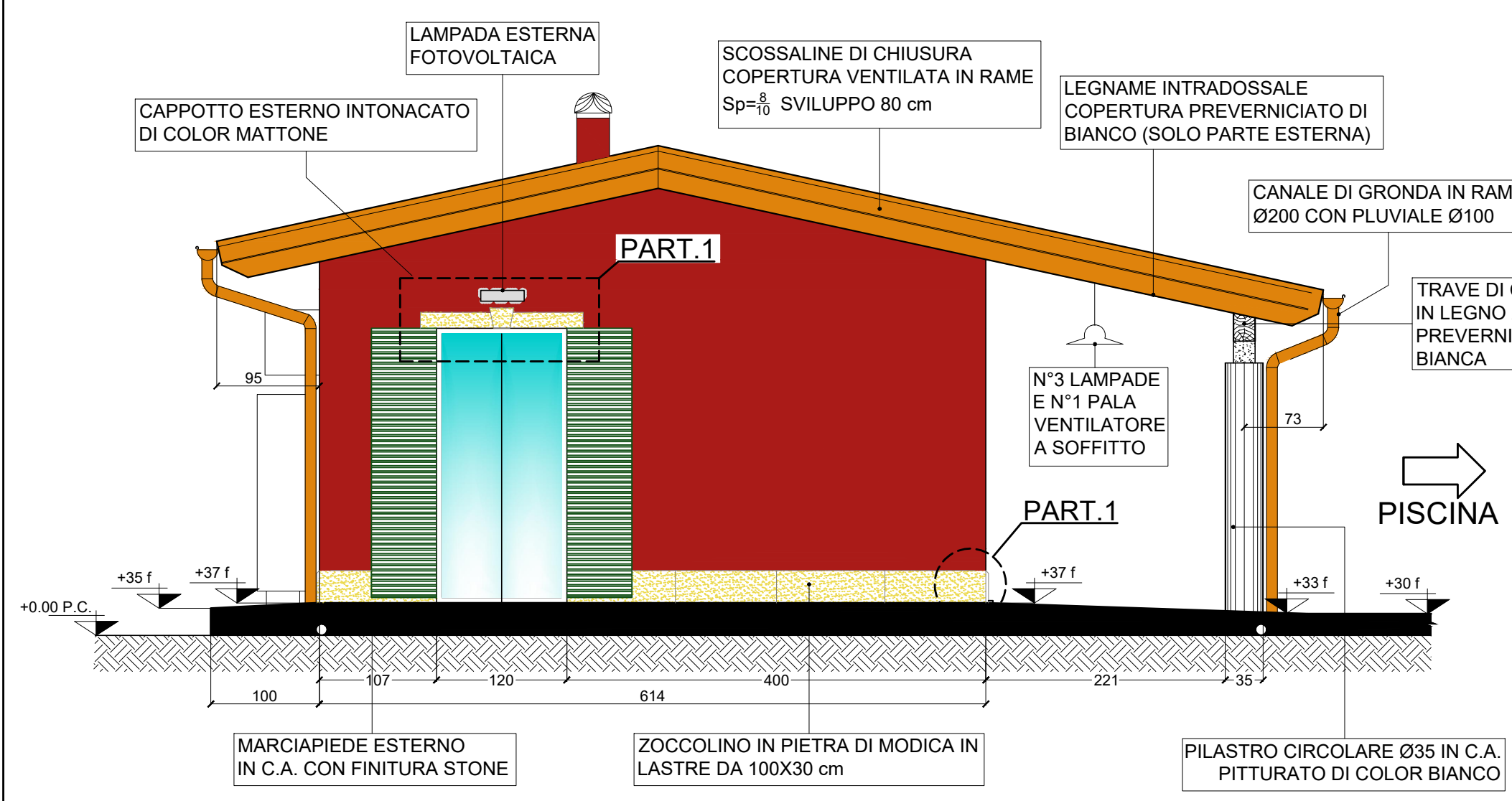


VISTA 3  
scala 1:50

VISTA 2  
scala 1:50

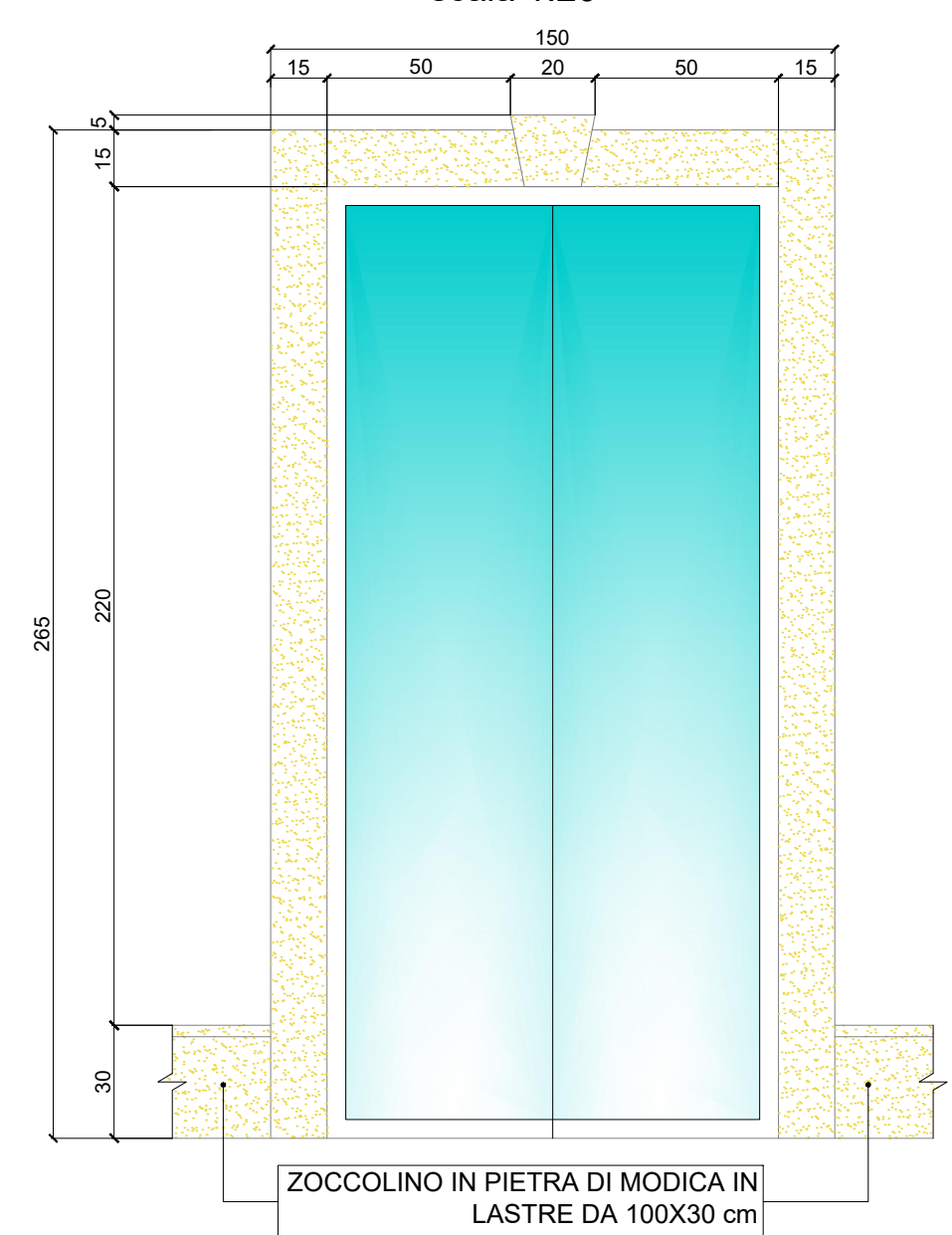


VISTA 4  
scala 1:50



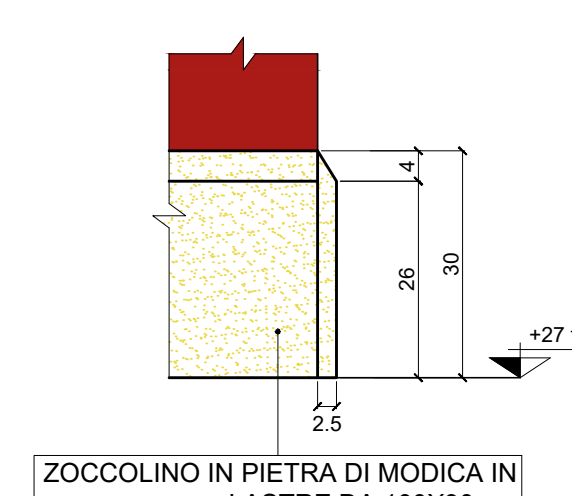
PART.2

CORNICE IN PIETRA DI MODICA CONTORNO FINESTRE E PORTEFINESTRE Sp=2,5 cm B=15cm  
scala 1:20



PART.1

ZOCCOLINO IN PIETRA DI MODICA h=30cm Sp=2,5 cm  
scala 1:10



CAPPELLO EOLICO SU COMIGNOLO



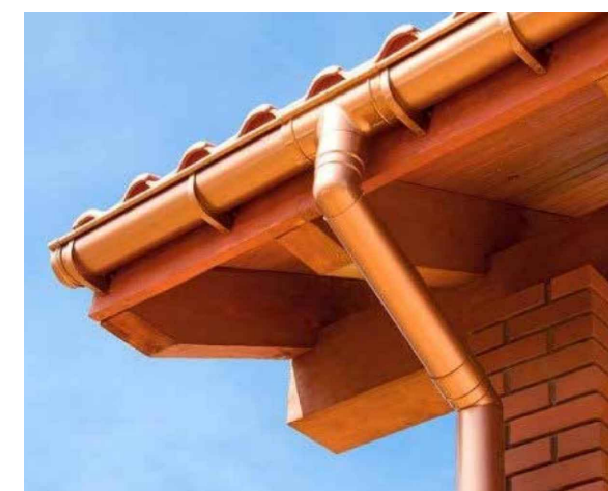
PERSIANE IN ALLUMINIO



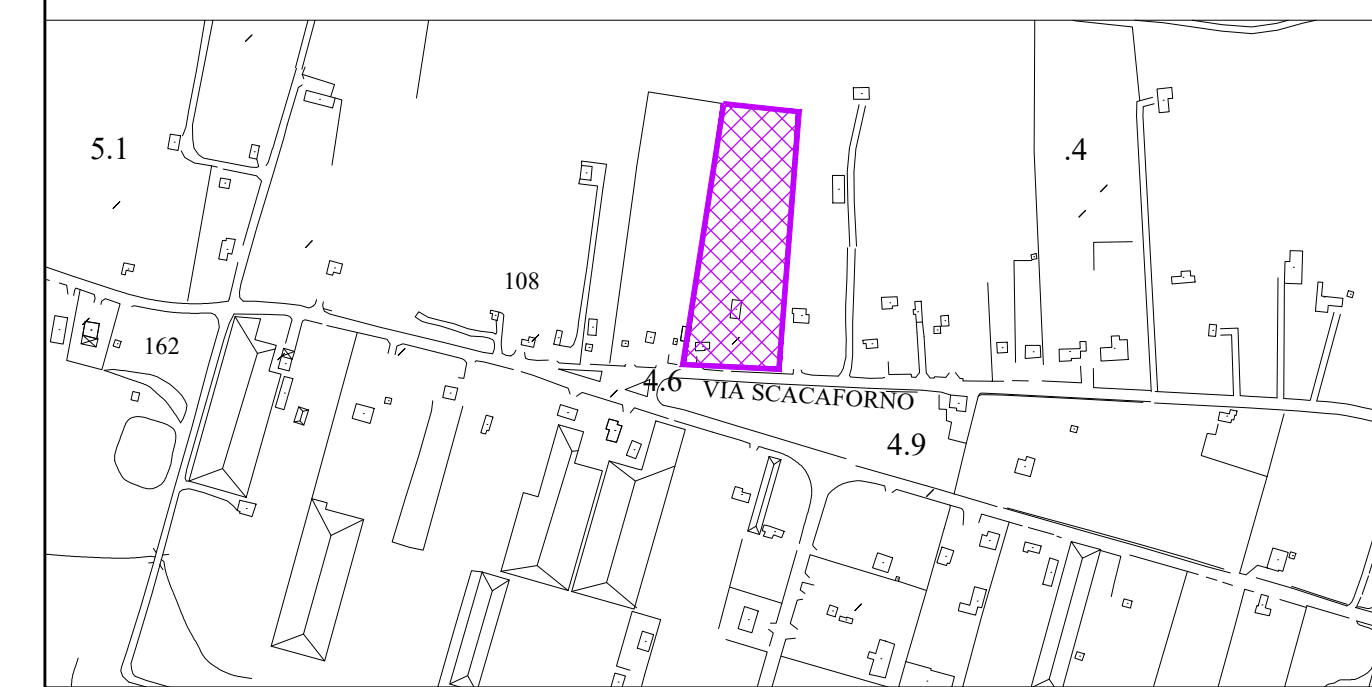
SCOSSALINE IN RAME



GRONDAIE E PLUVIALI IN RAME



KEY PLAN GENERALE



KEY PLAN AGRICAMPER

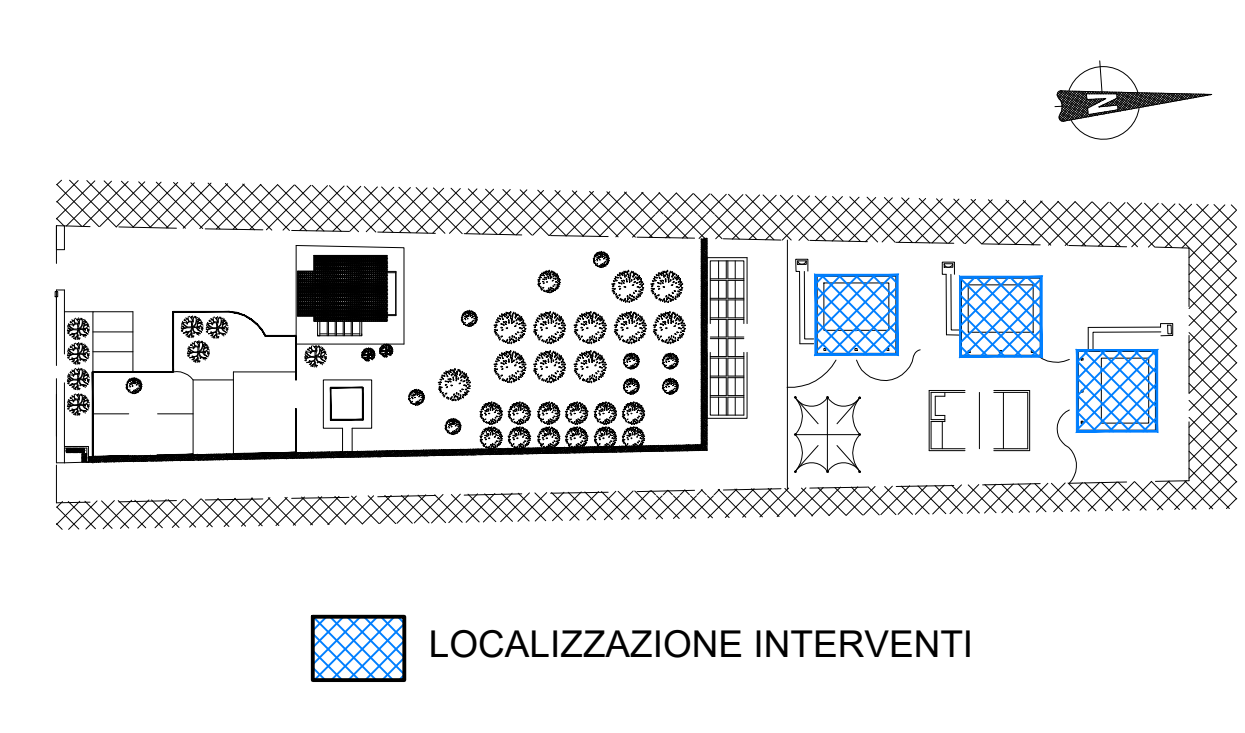


FOTO ESEMPIO DI PAVIMENTO IN CLS RESINATO LISCIO LUCIDO COLOR CALCESTRUZZO



COMUNE DI ISPICA  
(Provincia di Ragusa)

CREAZIONE DI PICCOLA ZONA AD "AGRITURISMO" ALL'INTERNO DI LOTTO UNITARIO

PROGETTO COSTRUTTIVO

ARCHITETTONICI CASETTA TIPOLOGICA

Aprile 2020

TAV.2A

scala 1:50  
1:20  
1:10

Progettista:

GBRG ENGINEERING Srl  
Sede Legale - Via Palmiro Togliatti n.54  
Sede Operativa - Via dei Fiori n.2/d  
Zibido San Giacomo (MI)  
ING. GIUNTA GIUSEPPE  
Tel. 02-9000.33.63 - Fax 02/922.70.938 giuseppe.giunta@gbrg.it - www.gbrg.it

Committente:  
Verde Oliva di Gislene De Roche